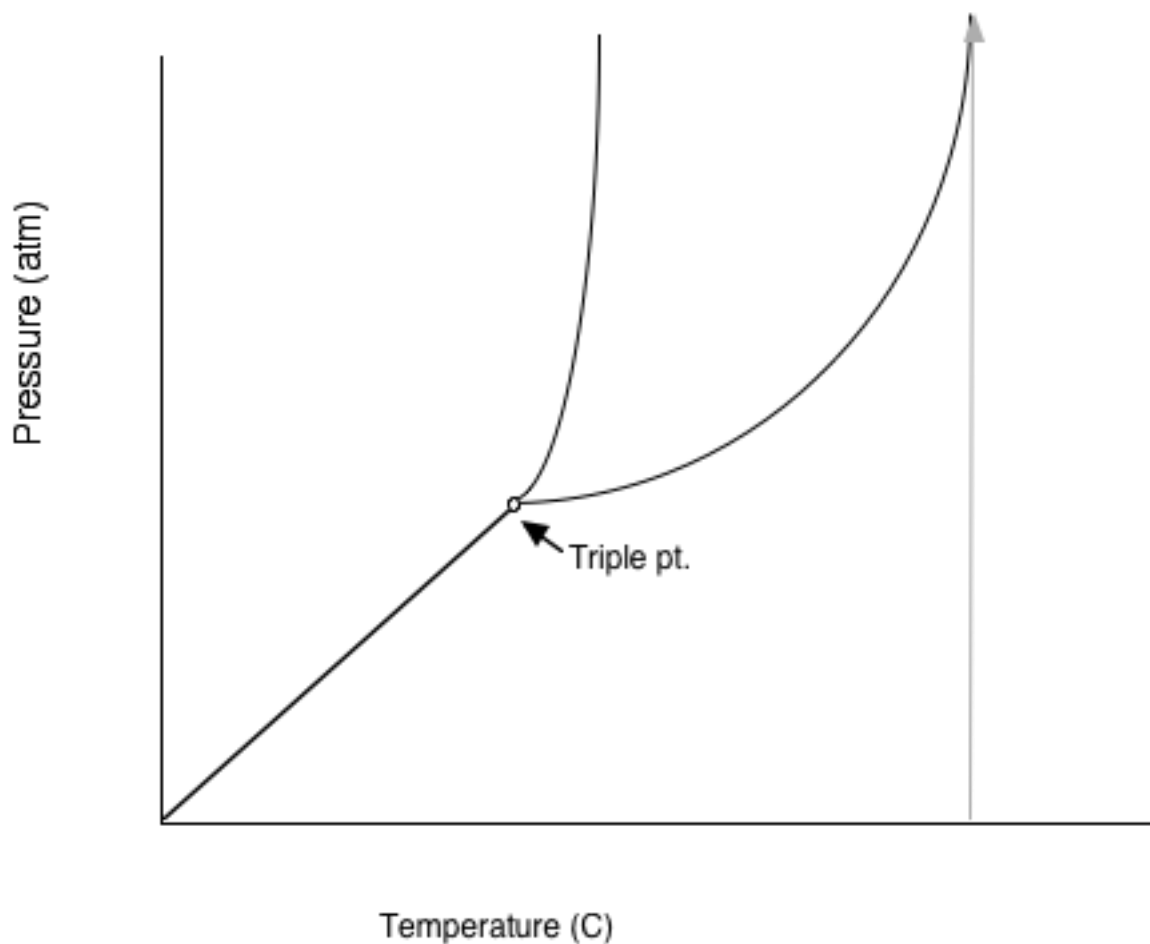


## Triple Point Graphs and Phase Change diagrams



- 1) In the above graph what phase is this substance in at 1 atm and 50 C?
- 2) At what temp and pressure will all three phases of the substance be present in a state of equilibrium?
- 3) If you are at pt C on the graph, what will happen to the substance if the temperature is increased?
- 4) If you are at pt D on the graph and you increase the pressure while keeping T constant, what will happen to the substance?
- 5) What is the boiling Temp of this substance at 2 atm? 3 atm? 4 atm?
- 6) What is the melting Temp of this substance at 2 atm? 3 atm? 4 atm?
- 7) What is the critical T of this substance?

Along which line will you have both liquid and vapor present?

Triple Point Graphs and Phase Change diagrams

